



St Thomas's

CE Primary School

April 2026 Newsletter

In This Issue



This month

- **Message from the Head of School**
- **Attendance and Punctuality**
- **Information on Statutory Assessments**
- **Admissions for September 2026**
- **Walk and Talk Group**
- **Dates for the Diary**
- **Term Dates for 2025/26**
- **Term Dates for 2026/27**
- **Prayer**

Message from the Head of School



Hello Everyone

What a busy half term this is! We are moving into a very busy month ahead and we are continuing to provide exciting experiences for our children at St Thomas's. Before we finish for half term Y5 will be visiting the Science and Industry Museum, Y4 have a Science of Sound Workshop and then all classes from Y1 to Y6 will be off to Burrs Country Park on the East Lancs Railway on May 21st!

I want to take this opportunity to wish our Y6 children the very best of luck in the SATs that are coming up in a couple of weeks. This will be an opportunity for our Y6 children to shine after all their hard work this year so far.

I look forward to welcoming Y1 parents to our Phonics Meeting on Friday 15th May. Y1 children will be undertaking the phonics screening check in June so it is essential that you attend this meeting so that you are aware of how you can support the children at home in the last weeks before the screening check.

We are also inviting parents to our weekly Walk and Talk event taking place around Openshaw Park every Thursday afternoon. This is to support wellbeing and physical health but also we are keen to hear the voices of our parents to help us with school improvement and development.

Please can I stress once again the importance of school attendance and how absence affects long term outcomes for our children. We continue to celebrate good attendance at school with prizes, certificates and awards and appreciate your support by sending the children in to school every day.

We are delighted to introduce **Hope** as our new school value — a reminder that by working together as parents, staff, and children, we can face challenges positively, believe in ourselves and others, and look forward with confidence and kindness. Hope underpins our shared commitment to nurturing ambition, resilience, and care for our world. This value feels especially fitting as we celebrate Sir David Attenborough’s birthday on Friday 8th May, marking the occasion with a special day focused on hope and aspiration. Through learning and reflection inspired by his life’s work, we will celebrate how Sir David represents hope for the future of our planet and encourages us all to make a positive difference, both locally and globally.



Attendance and Punctuality



Our school gates are open from **8:40am** until **8:55am**, and open again at **3:10pm** when school finishes.

The register for the first session will be taken at 8:55am and will be kept open by the class teacher until 9:00am. Following this, any late arrivals will be recorded by staff in the office who will record and update any changes on arrival.

Absence

Parents must notify the school on each day of absence by 8:45am or as soon as practically possible.

When phoning school to inform of your child's absence, please press 1 on the menu unless you need to speak to the office staff. When leaving a message, please clearly state your child's name, class and the reason for their absence.

If your child has sickness/diarrhoea, they must not attend school for 24 hours after the bout of symptoms.

Medical or Dental Appointments

Missing registration for a medical or dental appointment is counted as an authorised absence if the office has been informed of the appointment in advance.

However, we encourage parents to make medical and dental appointments out of school hours where possible. Where this is not possible, the pupil should be out of school for the minimum amount of time necessary.

We request that an appointment card is shown at the office in advance of the appointment so the class teacher can be informed.

Holidays During Term Time

Taking holidays in term time will affect a child's schooling as much as any other absence and we expect parents to help us by not taking children away during term time.

If you need to request a holiday during term time, then you will need to complete a Leave of Absence form which can be obtained from the school office.

Although the school will look at each request for leave on its own merit, requests will only be authorised for exceptional circumstances.

When taking your child out of school when a holiday is not authorised/requested, you may face legal action under Section 444 (1) or (1A) of the Education Act 1966 or be issued with a Penalty Notice under Section 23 of the Anti-Social Behaviour Act 2003.

Penalty Notices are issued **per parent, per child** at £80 each if paid within 21 days and rising to £160 each if paid within 28 days. Failure to pay a Penalty Notice will result in the Local Authority taking legal action against you under Section 444 (1) of the Education Act 1966.

The full version of our attendance policy can be found on the school website. We appreciate your cooperation in supporting your child's attendance and punctuality. Regular school attendance enhances their learning experience and helps them achieve their full potential.

If you have any questions or concerns regarding attendance, please do not hesitate to contact the school office. Together, let's ensure every school day is filled with enriching educational experiences for our children.

ATTENDANCE

WHAT THE NEW RULES MEAN FOR ME

1

I'm a single parent of one child and we want to go on holiday for a week

Your holiday will not be authorised and you must talk to the school before you book anything.

Because your child will miss 5 school days you will be given a penalty notice fine.

The fine is £160 but if you pay it within 21 days it will be reduced to £80

£160



2

IRREGULAR ATTENDANCE

10 IN 10

If your child is absent for 10 or more sessions in 10 weeks and their absences are unauthorised, the school will consider prosecution

1 day = 2 sessions

A PENALTY FOR EACH CHILD



+£160 +£160 +£160 +£160

4 children & 1 parent = £640

Reduced to £320 if paid within 21 days

4

FOR A FAMILY OF TWO PARENTS



+£160

+£160

+£160

+£160

4 children & 2 parents = £1,280

Reduced to £640 if paid within 21 days

5

If in any period of not more than 3 years, your child has a 2nd and 3rd leave of absence or pattern of irregular attendance...

SECOND TIME

2 parents and

1 child = £320

2 children = £640

3 children = £960

4 children = £1,280

No discount for early payment

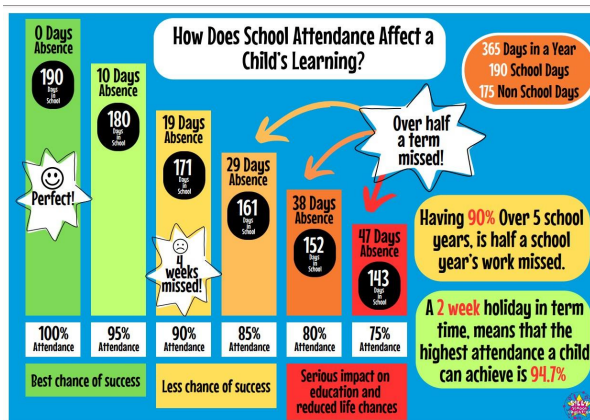


THIRD TIME

A penalty notice fine will not be given. Instead your case will be taken to court. A magistrate can fine each parent £2,500 for each child.

1 parent & 4 children = £10,000

2 parents & 4 children = £20,000





Information on Statutory Assessments



The following statutory assessments will be taking place during the Summer term.

Key Stage Two Statutory Exams for Year 6:

Our Year 6 pupils will be undertaking the Key Stage Two statutory exams, which are a crucial part of their educational journey. These exams include assessments in Reading; Grammar, Punctuation and Spelling; and Mathematics. The tests are designed to measure the children's ability to apply their knowledge in these key areas of the curriculum. We encourage parents to support their children by ensuring they have ample time for revision and rest.

The timetable for the KS2 SATs for Year 6 in 2026 is as follows;

Monday 11th May 2026 - English Grammar, Punctuation and Spelling Paper 1 and Paper 2

Tuesday 12th May 2026 - English Reading Paper

Wednesday 13th May 2026 - Mathematics Paper 1 and Paper 2

Thursday 14th May 2026 - Mathematics Paper 3

Phonics Screening for Year 1:

The phonics screening check for Year 1 is a short assessment to ensure that children are making sufficient progress with their phonics skills to read words. It is not a formal test but a way for teachers to identify if any additional support is needed. The check consists of 40 words, both real and pseudo-words, that your child will read to a teacher. We recommend that parents engage in regular reading practices with their children to build their phonics skills.

Multiplication Screening for Year 4:

Year 4 pupils will participate in the Multiplication Tables Check (MTC). This check is designed to determine whether pupils can recall their times tables fluently, which is essential for future success in mathematics. The MTC is an online, on-screen assessment where pupils will answer questions on time tables 2 to 12. We advise parents to help their children practice their multiplication tables regularly.

We understand that assessments can be a source of anxiety for some students, and we aim to support them through this period with additional resources and guidance. Please do not hesitate to contact your child's teacher if you have any concerns or require further information.

Further information is also available from the following Government websites:

National curriculum assessments: key stage 2 tests information for parents - GOV.UK

<https://www.gov.uk/government/publications/key-stage-2-national-curriculum-tests-and-results-information-for-parents>

Phonics screening check: information for parents - GOV.UK

<https://www.gov.uk/government/publications/phonics-screening-check-information-for-parents>

Multiplication tables check - GOV.UK

Admissions for September 2026



We are pleased to share that Reception places for September 2026 have now been allocated.

If you have received an offer, please ensure you contact the school office as soon as possible to confirm acceptance of your child's place. This will help us finalise our admissions and begin preparations for the new academic year.

If your child is 3 years old by the 31st August 2026 and you would like them to start Nursery in September, please let us know as we have a few places still available.

If you have any questions, please get in touch with the school office.

Walk and Talk Group

Fancy some fresh air, gentle exercise, and a good chat?

Walking and talking is a wonderful way to combine light physical activity with relaxed conversation. It's been shown to reduce stress, lift our mood, and improve mental clarity — all while giving us the chance to connect with one another in a friendly, informal setting.

Why Join Our Walk & Talk?

😊 Boost your **wellbeing and mood**

🧠 Clear your mind

💛 Connect with other parents through easy, side-by-side conversation

🧑🏻🧑🏻 Enjoy gentle movement at a comfortable pace

No pressure, no expectations — just turn up and walk with us!

This is a **casual, welcoming space** for everyone. Whether you come along every week or just when you can, we'd love to see you.

Let's walk, talk, and support our wellbeing together. 🌱

📌 **The Details**

What: 🧑🏻🧑🏻 Walk & Talk

When: 📅 Every Thursday afternoon at 2:30pm we will return to school on time for you to be able to pick up your child.

Where: School Street (meeting at the school gate)

Who: Mrs Lewis & Mrs Shaine

Dates for the Diary



Our key dates for the diary are listed below, please note that these dates may change and reminders for upcoming events will be posted on Parent Hub

Thursday 30th April - Walk and Talk Group begins

Monday 4th May - School closed for May Bank Holiday

Tuesday 5th May - Year 5A trip to the Science and Industry Museum

Tuesday 5th May - Year 4 Science of Sound Workshop

Thursday 7th May - Year 5B trip to the Science and Industry Museum

Friday 8th May - David Attenborough Day

Monday 11th May - Year 6 SATs Week

Friday 15th May - Year 1 Parents Phonics Meeting at 9am

Thursday 21st May - Year 1 to Year 6 trip to Burrs Country Park

Friday 22nd May - School closes for May half term break

Monday 1st June - School reopens for Summer 2

Monday 8th June - Year 6 Class Photo

Wednesday 17th June - Year 5 Waddow Hall Residential Trip

Term Dates for 2025/26

HOLIDAY PATTERN 2025-2026						
	PUPIL DAYS			PAD DAYS		SCHOOL DAYS PER HALF TERM
	BANK HOLIDAYS					
	SCHOOL HOLIDAYS					
	Mon	Tues	Wed	Thurs	Fri	
	25	26	27	28	29	Autumn Open
Sept 2025	30	1	2	3	4	38 days
	8	9	10	11	12	
	15	16	17	18	19	
	22	23	24	25	26	
	29	30	1	2	3	
October	6	7	8	9	10	
	13	14	15	16	17	
	20	21	22	23	24	
	27	28	29	30	31	Autumn Half Term
November	3	4	5	6	7	34 days
	10	11	12	13	14	
	17	18	19	20	21	
	24	25	26	27	28	
December	1	2	3	4	5	
	8	9	10	11	12	
	15	16	17	18	19	
	22	23	24	25	26	Autumn Close
Jan 2026	29	30	31	1	2	30 days
	5	6	7	8	9	
	12	13	14	15	16	
	19	20	21	22	23	
	26	27	28	29	30	
February	2	3	4	5	6	
	9	10	11	12	13	
	16	17	18	19	20	Spring Half Term
	23	24	25	26	27	29 Days
March	2	3	4	5	6	
	9	10	11	12	13	
	16	17	18	19	20	
	23	24	25	26	27	
April	30	31	1	2	3	
	6	7	8	9	10	
	13	14	15	16	17	Spring Close
	20	21	22	23	24	24 days
May	27	28	29	30	1	
	4	5	6	7	8	
	11	12	13	14	15	
	18	19	20	21	22	
	25	26	27	28	29	
June	1	2	3	4	5	35 days
	8	9	10	11	12	
	15	16	17	18	19	
	22	23	24	25	26	
July	29	30	1	2	3	
	6	7	8	9	10	
	13	14	15	16	17	
	20	21	22	23	24	Summer Close
TOTAL PUPIL DAYS						195

Term Dates for 2026/27

HOLIDAY PATTERN 2026-2027							
	PUPIL DAYS			PAD DAYS		SCHOOL DAYS PER HALF TERM	
	Mon	Tues	Wed	Thurs	Fri		
	BANK HOLIDAYS					Autumn Open	
	SCHOOL HOLIDAYS						
	24	25	26	27	28	38 days	
Sept 2026	31	1	2	3	4		
	7	8	9	10	11		
	14	15	16	17	18		
	21	22	23	24	25		
	28	29	30	1	2		
October	5	6	7	8	9		
	12	13	14	15	16		
	19	20	21	22	23		
	26	27	28	29	30		
	Autumn Half Term					35 days	
November	2	3	4	5	6		
	9	10	11	12	13		
	16	17	18	19	20		
	23	24	25	26	27		
December	30	1	2	3	4		
	7	8	9	10	11		
	14	15	16	17	18		
	21	22	23	24	25		
	28	29	30	31	1		
	Autumn Close					30 days	
Jan 2027	4	5	6	7	8		
	11	12	13	14	15		
	18	19	20	21	22		
	25	26	27	28	29		
February	1	2	3	4	5		
	8	9	10	11	12		
	15	16	17	18	19		
	22	23	24	25	26		
	29	30	31	1	2		
	Spring Half Term					24 Days	
March	1	2	3	4	5		
	8	9	10	11	12		
	15	16	17	18	19		
	22	23	24	25	26		
April	29	30	31	1	2		
	5	6	7	8	9		
	12	13	14	15	16		
	19	20	21	22	23		
	26	27	28	29	30		
	Spring Close					33 days	
May	3	4	5	6	7		
	10	11	12	13	14		
	17	18	19	20	21		
	24	25	26	27	28		
	Summer Half Term						30 days
June	31	1	2	3	4		
	7	8	9	10	11		
	14	15	16	17	18		
	21	22	23	24	25		
July	28	29	30	1	2		
	5	6	7	8	9		
	12	13	14	15	16		
	19	20	21	22	23		
	Summer Close						

TOTAL PUPIL DAYS

195

Prayer



Dear God

We give thanks for the life and energy of our busy school, for classrooms full of learning, playgrounds full of laughter, and a community that works together so faithfully.

We are grateful for our children, parents, and staff, united in purpose and partnership, each playing their part to make our school a truly fantastic place to be.

We lift up our children preparing for their SATs. Grant them calm hearts, clear minds, and confidence in all they have learned. May they know how proud we are of them.

As we embrace our new value of *hope*, help us to look forward with trust, kindness, and courage, believing always in the good to come.

Amen

Contact Us



If you wish to contact us

St Thomas's Primary School

Pimhole Road

BL9 7EY

0161 764 7565

stthomas@bury.gov.uk

Visit us on the web at www.stthomascep.co.uk

On Twitter @StThomasBury