

November 2024 Newsletter

In This Issue



This month

- **Message from the Headteacher**
- **Attendance and Punctuality**
- **SchoolMoney**
- **Christmas Fair**
- **Christmas Productions**
- **Dates for the Diary**
- **Term Dates for the Year**
- **Prayer**

Message from the Headteacher



Dear Parents and Carers,

Welcome back! This term is always a busy one as we count down to the Christmas break. Christmas is a significant event in the Christian calendar, and as a church school, we have several events planned to celebrate this special time of year. We hope to see as many parents as possible at these events. I will provide further updates regarding these celebrations closer to the time.

Next week, we will be hosting our parent-teacher meetings. This will be an excellent opportunity for you to meet with the teachers and discuss how the school year has started. These meetings will be held in the school hall, as in previous years, and will include the chance to look at some of the students' work.

Additionally, please keep an eye out for our coffee mornings. These are great opportunities for you to drop into school, meet various members of our leadership and parent support team, and get involved in supporting the school. Whether it's listening to readers or helping out at a school event, there are many ways to contribute. If you wish to get involved, please speak to Mrs. Begum.

Unfortunately, we have noticed several fires being lit in the school park near the school field gate. Although this has been reported, please remain vigilant and report any suspicious activity to the police to help us protect our precious parks and playing fields.

We will be sending out information in the coming weeks about our charity event, which will support our countdown to Christmas. This week, we have been reflecting on others as we commemorate Remembrance Day in school.

As the nights draw in, there will be plenty to celebrate in school to keep us warm. We look forward to welcoming you to one of our events.

Attendance and Punctuality



Our school gates are open from **8:40am** until **8:55am**, and open again at **3:10pm** when school finishes.

The register for the first session will be taken at 8:55am and will be kept open by the class teacher until 9:00am. Following this, any late arrivals will be recorded by staff in the office who will record and update any changes on arrival.

Absence

Parents must notify the school on each day of absence by 8:45am or as soon as practically possible.

When phoning school to inform of your child's absence, please press 1 on the menu unless you need to speak to the office staff. When leaving a message, please clearly state your child's name, class and the reason for their absence.

If your child has sickness/diarrhoea, they must not attend school for 24 hours after the bout of symptoms.

Medical or Dental Appointments

Missing registration for a medical or dental appointment is counted as an authorised absence if the office has been informed of the appointment in advance.

However, we encourage parents to make medical and dental appointments out of school hours where possible. Where this is not possible, the pupil should be out of school for the minimum amount of time necessary.

We request that an appointment card is shown at the office in advance of the appointment so the class teacher can be informed.

Holidays During Term Time

Taking holidays in term time will affect a child's schooling as much as any other absence and we expect parents to help us by not taking children away during term time.

If you need to request a holiday during term time, then you will need to complete a Leave of Absence form which can be obtained from the school office.

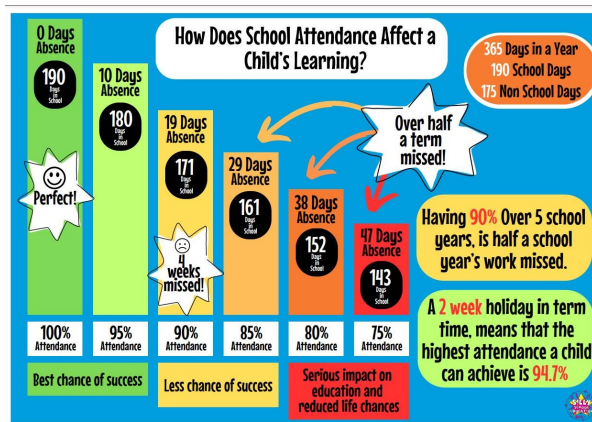
Although the school will look at each request for leave on its own merit, requests will only be authorised for exceptional circumstances.

When taking your child out of school when a holiday is not authorised/requested, you may face legal action under Section 444 (1) or (1A) of the Education Act 1966 or be issued with a Penalty Notice under Section 23 of the Anti-Social Behaviour Act 2003.

Penalty Notices are issued **per parent, per child** at £80 each if paid within 21 days and rising to £160 each if paid within 28 days. Failure to pay a Penalty Notice will result in the Local Authority taking legal action against you under Section 444 (1) of the Education Act 1966.

The full version of our attendance policy can be found on the school website. We appreciate your cooperation in supporting your child's attendance and punctuality. Regular school attendance enhances their learning experience and helps them achieve their full potential.

If you have any questions or concerns regarding attendance, please do not hesitate to contact the school office. Together, let's ensure every school day is filled with enriching educational experiences for our children.



SchoolMoney



We are delighted to inform you that we have recently signed up to the online payment system SchoolMoney.

This means that you will now have the facility to make payments for school expenses, such as trips, online with your debit or credit card. SchoolMoney also gives you the facility to book a place and pay online for our Breakfast Club.

This new payment system will benefit both us as a school and you as a parent. SchoolMoney will enable us to experience a more streamlined, cost-effective and efficient payment system in a secure and safe environment.

You won't need to sign up for this system as this is done automatically through the school, and passwords were sent via email/text on **Monday 11th November**. This password will give you access to your SchoolMoney account where you can pay for any items we have requested from you. If you need your password resending, please contact the school office.

To log into SchoolMoney, download the '**Teachers2Parents**' app via the App Store, or visit the website www.eduspot.co.uk and click on the sign in button in the top right-hand corner. In the drop down, select the **SchoolMoney Parent Login** option and this will send you through to a page where you need to enter your mobile number, email address, the password we have sent to you, and your child's first name.

If for any reason you are struggling to log in, it may be because you have not provided us with the correct contact details. Please let us know immediately if either your mobile number or email address changes.

We will be going live with SchoolMoney from **Monday 2nd December 2024**, so please ensure that you have signed up before this date. Bookings for Breakfast Club will be available from **Friday 29th November 2024**.

Christmas Fair



Our Christmas Fair is being held on Thursday 5th December from 3:15pm.

We will be holding a coffee morning on Friday 22nd November at 9am to discuss the planning for the event. If you are able to offer any support with the preparations, please come along and speak to Mrs Begum.

If you are interested in running your own stall at the Christmas Fair, please contact the school office.

We will also be sending out letters in regards to food donations in the coming weeks, if you are able to offer your support with providing food for the fair then this would be very much appreciated.

Christmas Productions



Our Christmas productions will be held on **Tuesday 17th December**, with the A classes performing in the morning in our school hall and the B classes performing in the afternoon at the Church.

We will also be holding an extra performance that families with babies and toddlers can attend on **Monday 16th December** in our school hall at 1:15pm.

Further details and information about ticket sales will be shared on Parent Hub in the coming weeks, so please be sure to keep an eye out for this information.

Dates for the Diary



Our key dates for the diary are listed below, please note that these dates may change and reminders for upcoming events will be posted on Parent Hub

Friday 15th November - Rock Kidz

Monday 18th November - EYFS/KS1 Parents Afternoon

Tuesday 19th November - KS2 Parents Afternoon

Thursday 21st November - Parents Evening

Friday 22nd November - Non-uniform day (Chocolate donation for the Christmas fair)

Friday 22nd November - Parents Literacy Tree Meeting at 9:00am

Friday 22nd November - Parents Coffee Morning at 9:00am (Christmas fair planning)

Friday 29th November - Non-uniform day (£1 donation for the Christmas fair)

Thursday 5th December - Christmas Fair from 3:15pm

Friday 13th December - Parents Christmas Breakfast

Monday 16th December - Christmas Production at 1:30pm (For families with babies/toddlers)

Tuesday 17th December - Christmas Productions

Wednesday 18th December - Christmas Dinner Day

Friday 20th December - School closes at 2pm for the Christmas break

Monday 6th January - School reopens for the Spring term

Term Dates 2024/2025

St Thomas's C.E. Primary School
Term Dates 2024/2025

HOLIDAY PATTERN 2024-2025						
	PUPIL DAYS			PAD DAYS		SCHOOL DAYS PER HALF TERM
	BANK HOLIDAYS					
	SCHOOL HOLIDAYS					
	Mon	Tues	Wed	Thurs	Fri	
Sept 2024			4	5	6	Autumn Open
	9	10	11	12	13	
	16	17	18	19	20	
	23	24	25	26	27	33 days
October	30	1	2	3	4	
	7	8	9	10	11	
	14	15	16	17	18	
	21	22	23	24	25	Autumn Half Term
November	28	29	30	31	1	
	4	5	6	7	8	
	11	12	13	14	15	
	18	19	20	21	22	39 days
	25	26	27	28	29	
December	2	3	4	5	6	
	9	10	11	12	13	
	16	17	18	19	20	
	23	24	25	26	27	Autumn Close
Jan 2025	30	31	1	2	3	
	6	7	8	9	10	
	13	14	15	16	17	30 days
	20	21	22	23	24	
	27	28	29	30	31	
February	3	4	5	6	7	
	10	11	12	13	14	
	17	18	19	20	21	Spring Half Term
	24	25	26	27	28	
March	3	4	5	6	7	
	10	11	12	13	14	30 days
	17	18	19	20	21	
	24	25	26	27	28	
April	31	1	2	3	4	
	7	8	9	10	11	Spring Close
	14	15	16	17	18	
	21	22	23	24	25	
May	28	29	30	1	2	23 days
	5	6	7	8	9	
	12	13	14	15	16	
	19	20	21	22	23	
	26	27	28	29	30	Summer Half Term
June	2	3	4	5	6	
	9	10	11	12	13	
	16	17	18	19	20	35 days
	23	24	25	26	27	
July	30	1	2	3	4	
	7	8	9	10	11	
	14	15	16	17	18	
	21	22	23	24	25	Summer Close
	26	27	28	29	30	
TOTAL PUPIL DAYS						195

Prayer



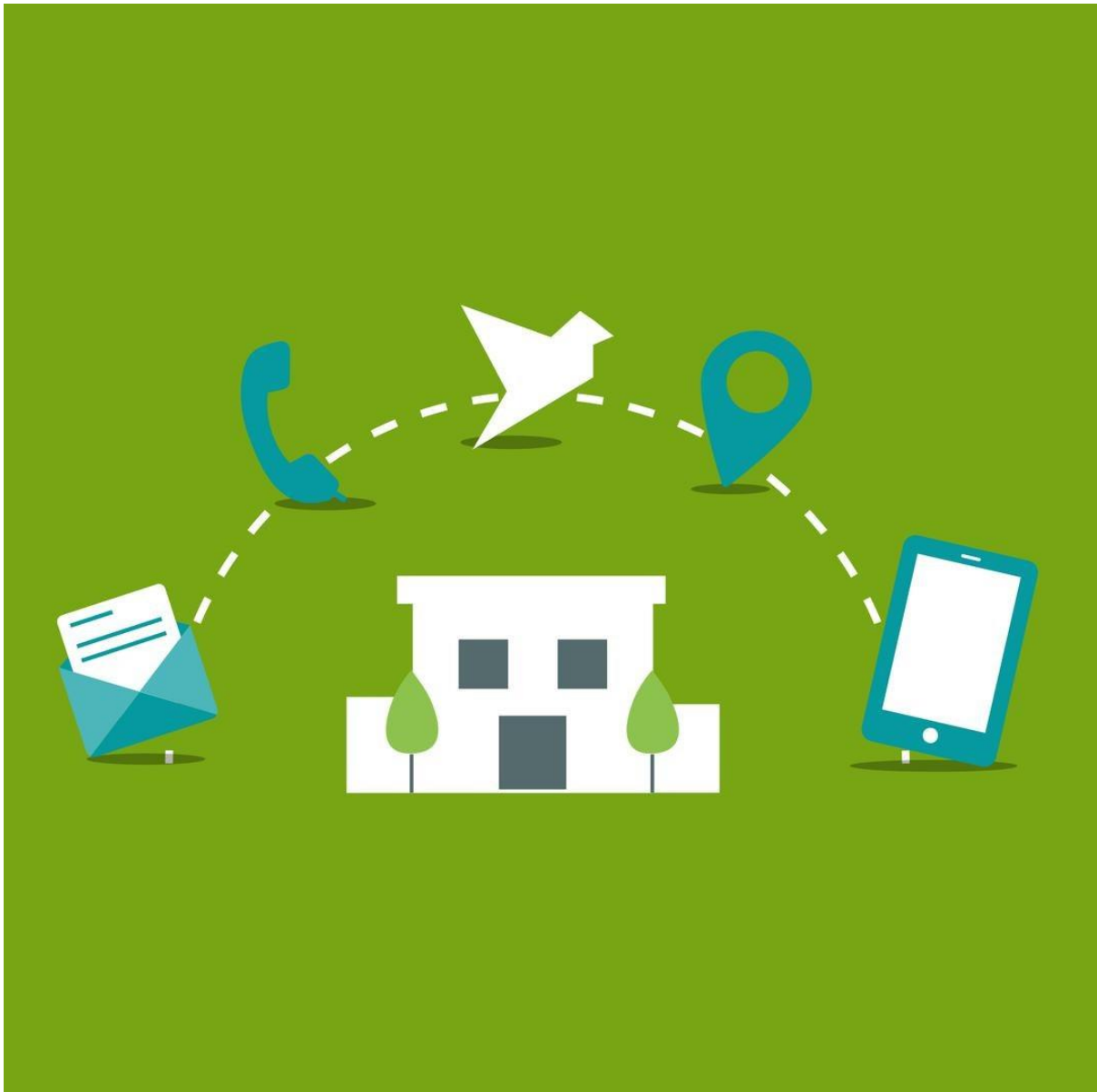
As we enter the second term, we thank you for the opportunities ahead and the joy of the Christmas season on the horizon. As the days grow shorter and the nights longer, we ask for your light to guide us through our studies and activities.

Help us to embrace the spirit of Christmas, sharing kindness and love with those around us. May this term be filled with learning, growth, and the warmth of community.

Keep us safe and healthy, and may we find joy in the small moments as we prepare for the festive season.

Amen.

Contact Us



If you wish to contact us

St Thomas's Primary School

Pimhole Road

BL9 7EY

0161 764 7565

stthomas@bury.gov.uk

Visit us on the web at www.stthomascep.co.uk

On Twitter @StThomasBury