



# St Thomas's

## CE Primary School

November 2025 Newsletter

## In This Issue



This month

- **Message from the Head of School**
- **Attendance and Punctuality**
- **Playground Redevelopment**
- **Christmas Fair**
- **Christmas Performances**
- **Reception 2026 Applications**
- **Dates for the Diary**
- **Term Dates for the Year**
- **Prayer**

## Message from the Head of School

We are in the middle of a very busy but very exciting half term. Thank you for your patience and compassion around the works that are going on in our Reception and Harbour

playgrounds. We appreciate parents using the park gate to exit school which avoids congestion at our main entrance.

There are lots of exciting things happening over the next few weeks as you can see from the dates for your diary section. Please keep checking the dates so you don't miss anything important!

This week is assessment week at school which is an opportunity for your children to shine and show their teachers what they have learnt over the last term. Teachers can then plan the next steps for learning.

Thank you for your attendance at parents evening this half term and we really appreciated all the lovely comments and feedback that our fantastic Head Pupils collected as you exited school.

Next half term we will be developing our Pupil Parliament which will give the children more opportunity to make their voices heard and support us with school improvement. This also supports our drive and commitment to improve oracy skills at St Thomas's through the launch and development of Voice 21 which is being led by Mr Grover and Mrs Lewis. We will share more about this in the Spring term.

Your children will be feeling tired as this half term comes to an end. Please keep sending them into school so they don't miss the important learning that is taking place. Attendance at school is vitally important to progress academically and to build and maintain relationships with peers.

Thank you as always for your support.

## Attendance and Punctuality



Our school gates are open from **8:40am** until **8:55am**, and open again at **3:10pm** when school finishes.

The register for the first session will be taken at 8:55am and will be kept open by the class teacher until 9:00am. Following this, any late arrivals will be recorded by staff in the office who will record and update any changes on arrival.

### **Absence**

Parents must notify the school on each day of absence by 8:45am or as soon as practically possible.

When phoning school to inform of your child's absence, please press 1 on the menu unless you need to speak to the office staff. When leaving a message, please clearly state your child's name, class and the reason for their absence.

If your child has sickness/diarrhoea, they must not attend school for 24 hours after the bout of symptoms.

### **Medical or Dental Appointments**

Missing registration for a medical or dental appointment is counted as an authorised absence if the office has been informed of the appointment in advance.

However, we encourage parents to make medical and dental appointments out of school hours where possible. Where this is not possible, the pupil should be out of school for the minimum amount of time necessary.

We request that an appointment card is shown at the office in advance of the appointment so the class teacher can be informed.

### **Holidays During Term Time**

Taking holidays in term time will affect a child's schooling as much as any other absence and we expect parents to help us by not taking children away during term time.

If you need to request a holiday during term time, then you will need to complete a Leave of Absence form which can be obtained from the school office.

Although the school will look at each request for leave on its own merit, requests will only be authorised for exceptional circumstances.

When taking your child out of school when a holiday is not authorised/requested, you may face legal action under Section 444 (1) or (1A) of the Education Act 1966 or be issued with a Penalty Notice under Section 23 of the Anti-Social Behaviour Act 2003.

Penalty Notices are issued **per parent, per child** at £80 each if paid within 21 days and rising to £160 each if paid within 28 days. Failure to pay a Penalty Notice will result in the Local Authority taking legal action against you under Section 444 (1) of the Education Act 1966.

The full version of our attendance policy can be found on the school website. We appreciate your cooperation in supporting your child's attendance and punctuality. Regular school attendance enhances their learning experience and helps them achieve their full potential.

If you have any questions or concerns regarding attendance, please do not hesitate to contact the school office. Together, let's ensure every school day is filled with enriching educational experiences for our children.

# ATTENDANCE

**Bury**  
Council

## WHAT THE NEW RULES MEAN FOR ME

**1**

### I'm a single parent of one child and we want to go on holiday for a week

Your holiday will not be authorised and you must talk to the school before you book anything.

Because your child will miss 5 school days you will be given a penalty notice fine.

The fine is £160 but if you pay it within 21 days it will be reduced to £80

**£160**



**2**

### IRREGULAR ATTENDANCE

**10 IN 10**

If your child is absent for 10 or more sessions in 10 weeks and their absences are unauthorised, the school will consider prosecution

**1 day = 2 sessions**

### A PENALTY FOR EACH CHILD



**+£160 +£160 +£160 +£160**

**4 children & 1 parent = £640**

Reduced to £320 if paid within 21 days

**4**

### FOR A FAMILY OF TWO PARENTS



**+£160**

**+£160**

**+£160**

**+£160**

**4 children & 2 parents = £1,280**

Reduced to £640 if paid within 21 days

**5**

If in any period of not more than 3 years, your child has a 2nd and 3rd leave of absence or pattern of irregular attendance...

### SECOND TIME

#### 2 parents and

1 child = £320

2 children = £640

3 children = £960

4 children = £1,280

No discount for early payment



### THIRD TIME

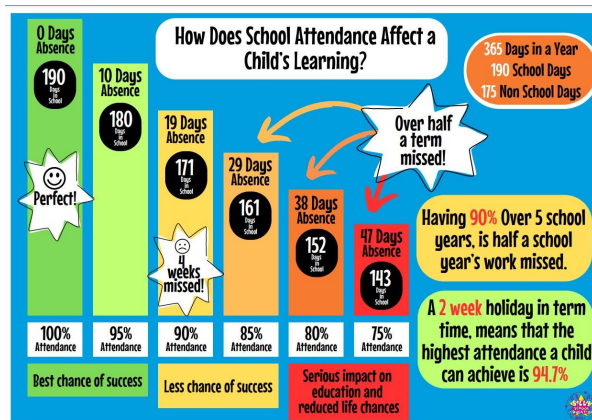
A penalty notice fine will not be given.

Instead your case will be taken to court.

A magistrate can fine each parent £2,500 for each child.

**1 parent & 4 children = £10,000**

**2 parents & 4 children = £20,000**





## Playground Redevelopment

We are delighted to share an exciting update on the ongoing redevelopment of our school playgrounds - a project designed to enrich outdoor learning, inspire imaginative play, and ensure every child has access to safe, stimulating spaces to explore and enjoy.

### Reception Playground Completed

The first major milestone in this multi-phase project is now complete: **our brand-new Reception playground!**

The redesigned area features:

- **New climbing and balancing equipment** to help build strength, coordination, and confidence
- **Sensory areas** to develop motor skills, problem-solving abilities and creativity through hands-on exploration
- **A dedicated imaginative-play area**, perfect for role-play, storytelling, and social interaction
- **Improved all-weather sections**, allowing children to enjoy the outdoors year-round

### Next Steps in the Redevelopment

With the successful completion of the Reception playground, attention now turns to the redevelopment of the remaining outdoor areas across the school. Work has already begun on our Nursery and Harbour playgrounds, and the main playground will be completed in the upcoming months.

Thank you for your ongoing support. Together, we're building spaces that our children will enjoy for many years to come.







## Christmas Fair



Our Christmas Fair is being held on Thursday 11th December from 3:15pm.

If you are able to offer any support with the preparations, please speak to Mrs Begum.

If you are interested in running your own stall at the Christmas Fair, please contact the school office.

A letter has been sent home in regards to food donations, if you are able to offer your support with providing food for the fair then this would be very much appreciated.

We will be holding non-uniform days in the run up to the Christmas Fair to receive donations for some of our stalls. For the non-uniform day on **Friday 28th November**, we ask that children in **Nursery, Reception, Year 1** and **Year 2** bring a chocolate donation, and children in **Year 3, Year 4, Year 5** and **Year 6** bring a bottle donation for our tombola. This can be a bottle of fizzy drink or squash, a bottle of shampoo, conditioner, shower gel etc. We ask that all bottles donated are new and sealed.

For the non-uniform day on **Friday 5th December**, we ask that all children bring a £1 donation to go towards the fair.

## Christmas Performances



Our Christmas performances will be held on **Thursday 18th December**, with the A classes performing at 9:15am and the B classes performing at 1:45pm in our school hall.

Further details and information about ticket sales will be shared on Parent Hub in the coming weeks, so please be sure to keep an eye out for this information.

## Reception 2026 Applications



A reminder that the deadline to submit your applications for Reception for September 2026 is on Thursday 15th January 2026.

You will find out which school your child has been allocated on Thursday 16th April 2026.

Information on the application process, key dates and how to apply online can be found on the Bury Council website via the following link;

<https://www.bury.gov.uk/schools-and-learning/school-admissions/primary-school>

## Dates for the Diary



Our key dates for the diary are listed below, please note that these dates may change and reminders for upcoming events will be posted on Parent Hub

**Friday 28th November** - Non-Uniform Day (Tombola Donations)

**Monday 1st December to Friday 5th December** - Year 6A Swimming Lessons

**Friday 5th December** - Non-Uniform Day (£1 Donation)

**Monday 8th December to Friday 12th December** - Year 6B Swimming Lessons

**Thursday 11th December** - Christmas Fair

**Friday 12th December** - Rock Kidz

**Wednesday 17th December** - Christmas Dinner Day

**Thursday 18th December** - Christmas Performances; Class A at 9:15am and Class B at 1:45pm

**Friday 19th December** - School closes for half term

**Monday 5th January** - School reopens for Spring 1

**Tuesday 6th January** - Reception and Year 1 Chester Zoo Trip

**Thursday 15th January** - Year 4 Deva Roman Experience Trip

## Wednesday 21st January - Year 5 Jodrell Bank Trip

### Term Dates for 2025/26

HOLIDAY PATTERN 2025-2026						
	PUPIL DAYS				PAD DAYS	SCHOOL DAYS PER HALF TERM
	BANK HOLIDAYS					
	SCHOOL HOLIDAYS					
	Mon	Tues	Wed	Thurs	Fri	Autumn Open
	25	26	27	28	29	38 days
Sept 2025	1	2	3	4	5	
	8	9	10	11	12	
	15	16	17	18	19	
	22	23	24	25	26	
	29	30	1	2	3	
October	6	7	8	9	10	
	13	14	15	16	17	
	20	21	22	23	24	
	27	28	29	30	31	Autumn Half Term
November	3	4	5	6	7	34 days
	10	11	12	13	14	
	17	18	19	20	21	
	24	25	26	27	28	
December	1	2	3	4	5	
	8	9	10	11	12	
	15	16	17	18	19	
	22	23	24	25	26	Autumn Close
Jan 2026	29	30	31	1	2	
	5	6	7	8	9	30 days
	12	13	14	15	16	
	19	20	21	22	23	
	26	27	28	29	30	
February	2	3	4	5	6	
	9	10	11	12	13	Spring Half Term
	16	17	18	19	20	
	23	24	25	26	27	
March	2	3	4	5	6	29 Days
	9	10	11	12	13	
	16	17	18	19	20	
	23	24	25	26	27	
April	30	31	1	2	3	Spring Close
	6	7	8	9	10	
	13	14	15	16	17	
	20	21	22	23	24	24 days
May	27	28	29	30	1	
	4	5	6	7	8	
	11	12	13	14	15	
	18	19	20	21	22	
	25	26	27	28	29	Summer Half Term
June	1	2	3	4	5	35 days
	8	9	10	11	12	
	15	16	17	18	19	
	22	23	24	25	26	
July	29	30	1	2	3	
	6	7	8	9	10	
	13	14	15	16	17	
	20	21	22	23	24	Summer Close
TOTAL PUPIL DAYS						195

## Prayer



As we enter the second term, we thank you for the opportunities ahead and the joy of the Christmas season on the horizon. As the days grow shorter and the nights longer, we ask for your light to guide us through our studies and activities.

Help us to embrace the spirit of Christmas, sharing kindness and love with those around us. May this term be filled with learning, growth, and the warmth of community.

Keep us safe and healthy, and may we find joy in the small moments as we prepare for the festive season.

Amen.

## Contact Us



If you wish to contact us

### **St Thomas's Primary School**

Pimhole Road

BL9 7EY

0161 764 7565

stthomas@bury.gov.uk

Visit us on the web at [www.stthomascep.co.uk](http://www.stthomascep.co.uk)

On Twitter @StThomasBury