



St Thomas's

CE Primary School

October 2025 Newsletter

In This Issue



This month

- **Message from the Head of School**
- **Attendance and Punctuality**
- **High School Applications**
- **Reception 2026 Applications**
- **Dates for the Diary**
- **Term Dates for the Year**
- **Prayer**

Message from the Head of School



1 - Well done to our footballers!

As we come to the end of our first half term of the new year and indeed my first half term as your new Head of School, I would like to thank you for your support in getting the children back to school and settled into their new classes.

It has been a busy half term with a wide variety of extra curricular events going on. We have welcomed Colin Parsons who is a children's author into school who worked with some of our Y5 and Y6 children.

Congratulations to our football team who came 4th in the Trust football tournament last week. Mr Hyde will be running a football club next half term so we hope to discover more footballing talent as we move through the year and hope there will be more opportunities to join in with tournaments across the Sycamore Trust.

We are delighted that our Forest School is back up and running and the children will be in there enjoying stories and some craft activities whilst enjoying a hot chocolate this week as part of our Harvest celebrations.

Tickets are available for our Harvest Collective Worship on Friday at 9:15am so please come and join us!

I look forward to seeing you at Parent's Evening after the half term holiday. Please sign up when the lists go up during the first week back.

Attendance and Punctuality



Our school gates are open from **8:40am** until **8:55am**, and open again at **3:10pm** when school finishes.

The register for the first session will be taken at 8:55am and will be kept open by the class teacher until 9:00am. Following this, any late arrivals will be recorded by staff in the office who will record and update any changes on arrival.

Absence

Parents must notify the school on each day of absence by 8:45am or as soon as practically possible.

When phoning school to inform of your child's absence, please press 1 on the menu unless you need to speak to the office staff. When leaving a message, please clearly state your child's name, class and the reason for their absence.

If your child has sickness/diarrhoea, they must not attend school for 24 hours after the bout of symptoms.

Medical or Dental Appointments

Missing registration for a medical or dental appointment is counted as an authorised absence if the office has been informed of the appointment in advance.

However, we encourage parents to make medical and dental appointments out of school hours where possible. Where this is not possible, the pupil should be out of school for the minimum amount of time necessary.

We request that an appointment card is shown at the office in advance of the appointment so the class teacher can be informed.

Holidays During Term Time

Taking holidays in term time will affect a child's schooling as much as any other absence and we expect parents to help us by not taking children away during term time.

If you need to request a holiday during term time, then you will need to complete a Leave of Absence form which can be obtained from the school office.

Although the school will look at each request for leave on its own merit, requests will only be authorised for exceptional circumstances.

When taking your child out of school when a holiday is not authorised/requested, you may face legal action under Section 444 (1) or (1A) of the Education Act 1966 or be issued with a Penalty Notice under Section 23 of the Anti-Social Behaviour Act 2003.

Penalty Notices are issued **per parent, per child** at £80 each if paid within 21 days and rising to £160 each if paid within 28 days. Failure to pay a Penalty Notice will result in the Local Authority taking legal action against you under Section 444 (1) of the Education Act 1966.

The full version of our attendance policy can be found on the school website. We appreciate your cooperation in supporting your child's attendance and punctuality. Regular school attendance enhances their learning experience and helps them achieve their full potential.

If you have any questions or concerns regarding attendance, please do not hesitate to contact the school office. Together, let's ensure every school day is filled with enriching educational experiences for our children.

ATTENDANCE

WHAT THE NEW RULES MEAN FOR ME

1

I'm a single parent of one child and we want to go on holiday for a week

Your holiday will not be authorised and you must talk to the school before you book anything.

Because your child will miss 5 school days you will be given a penalty notice fine.

The fine is £160 but if you pay it within 21 days it will be reduced to £80

£160



2

IRREGULAR ATTENDANCE

10 IN 10

If your child is absent for 10 or more sessions in 10 weeks and their absences are unauthorised, the school will consider prosecution

1 day = 2 sessions

A PENALTY FOR EACH CHILD



+£160 +£160 +£160 +£160

4 children & 1 parent = £640

Reduced to £320 if paid within 21 days

4

FOR A FAMILY OF TWO PARENTS



+£160

+£160

+£160

+£160

4 children &
2 parents =
£1,280

Reduced to £640 if paid
within 21 days

5

If in any period of not more than 3 years, your child has a 2nd and 3rd leave of absence or pattern of irregular attendance...

SECOND TIME

2 parents and

1 child = £320

2 children = £640

3 children = £960

4 children = £1,280

No discount for early payment



THIRD TIME

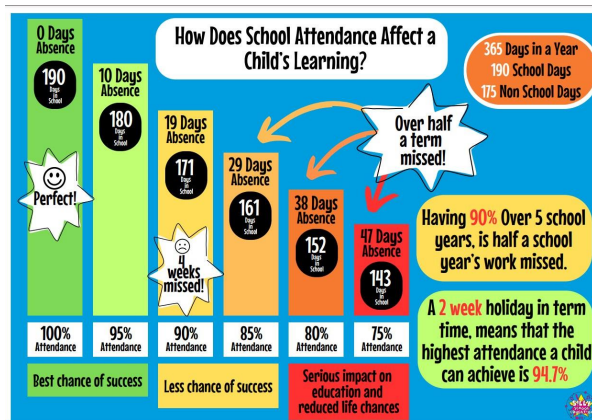
A penalty notice fine will not be given.

Instead your case will be taken to court.

A magistrate can fine each parent £2,500 for each child.

1 parent & 4 children = £10,000

2 parents & 4 children = £20,000





High School Applications



A reminder that the deadline to submit your high school applications for September 2026 is on Friday 31st October 2025.

You will find out which high school your child has been allocated on Monday 2nd March 2026.

Information on the application process, key dates and how to apply online can be found on the Bury Council website via the following link;

<https://www.bury.gov.uk/schools-and-learning/school-admissions/secondary-school>

Reception 2026 Applications



Applications for Reception for September 2026 will open on 1st November 2025, and must be submitted by 15th January 2026.

Information on the application process, key dates and how to apply online can be found on the Bury Council website via the following link;

<https://www.bury.gov.uk/schools-and-learning/school-admissions/primary-school>

Dates for the Diary



Our key dates for the diary are listed below, please note that these dates may change and reminders for upcoming events will be posted on Parent Hub

Friday 24th October - Harvest Assembly at 9:15am

Friday 24th October - School closes for half term

Tuesday 4th November - School reopens for Autumn 2

Tuesday 4th November - Aladdin Pantomime in School

Monday 10th November - EYFS/KS1 Parent Afternoon

Tuesday 11th November - KS2 Parent Afternoon

Wednesday 12th November - Year 5 & 6 Cinema Trip

Wednesday 12th November - Parents Evening

Thursday 13th November - Year 3 Paint a Pot Workshop

Thursday 13th November - Year 6 Paint a Pot Workshop

Thursday 13th November - Year 4 Cinema Trip

Wednesday 19th November - Year 3 Cinema Trip

Friday 28th November - Non-Uniform Day (Tombola Donations)

Monday 1st December to Friday 5th December - Year 6A Swimming Lessons

Friday 5th December - Non-Uniform Day (£1 Donation)

Monday 8th December to Friday 12th December - Year 6B Swimming Lessons

Thursday 11th December - Christmas Fair

Friday 12th December - Rock Kidz

Term Dates for 2025/26

HOLIDAY PATTERN 2025-2026							
	PUPIL DAYS					PAD DAYS	SCHOOL DAYS PER HALF TERM
	BANK HOLIDAYS						
	SCHOOL HOLIDAYS						
	Mon	Tues	Wed	Thurs	Fri		Autumn Open
	25	26	27	28	29		
Sept 2025	1	2	3	4	5		
	8	9	10	11	12		38 days
	15	16	17	18	19		
	22	23	24	25	26		
	29	30	1	2	3		
October	6	7	8	9	10		
	13	14	15	16	17		
	20	21	22	23	24		
	27	28	29	30	31		Autumn Half Term
November	3	4	5	6	7		
	10	11	12	13	14		34 days
	17	18	19	20	21		
	24	25	26	27	28		
December	1	2	3	4	5		
	8	9	10	11	12		
	15	16	17	18	19		
	22	23	24	25	26		Autumn Close
Jan 2026	29	30	31	1	2		
	5	6	7	8	9		30 days
	12	13	14	15	16		
	19	20	21	22	23		
	26	27	28	29	30		
February	2	3	4	5	6		
	9	10	11	12	13		
	16	17	18	19	20		Spring Half Term
	23	24	25	26	27		
March	2	3	4	5	6		29 Days
	9	10	11	12	13		
	16	17	18	19	20		
	23	24	25	26	27		
April	30	31	1	2	3		
	6	7	8	9	10		Spring Close
	13	14	15	16	17		
	20	21	22	23	24		
May	27	28	29	30	1		
	4	5	6	7	8		
	11	12	13	14	15		24 days
	18	19	20	21	22		
	25	26	27	28	29		
June	1	2	3	4	5		
	8	9	10	11	12		
	15	16	17	18	19		35 days
	22	23	24	25	26		
July	29	30	1	2	3		
	6	7	8	9	10		
	13	14	15	16	17		
	20	21	22	23	24		Summer Close
TOTAL PUPIL DAYS							195

Prayer



Dear God,

Thank You for the beauty of this harvest season—

For golden fields, crisp apples, and the food we share.

We are grateful for all You provide,

And for the people who help bring food to our tables.

Help us to show **kindness** to others,

To build **friendships** that grow strong like trees,

To offer **trust** in times of need,

And to treat everyone with **respect**, just as Jesus taught us.

As we prepare for the holidays,

Keep us safe in all we do—

Whether we're at home, with family, or out exploring.

May we return refreshed, ready to learn and care for one another.

Amen.

Contact Us



If you wish to contact us

St Thomas's Primary School

Pimhole Road

BL9 7EY

0161 764 7565

stthomas@bury.gov.uk

Visit us on the web at www.stthomascep.co.uk

On Twitter @StThomasBury